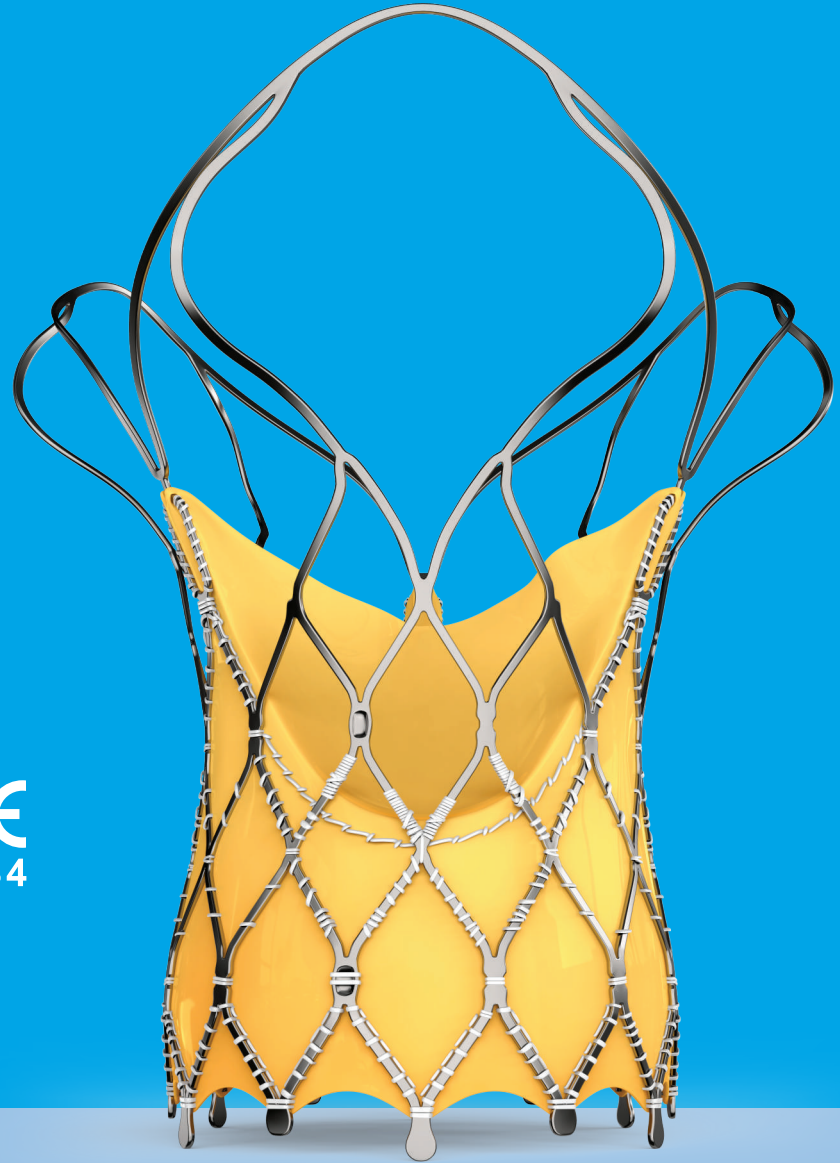
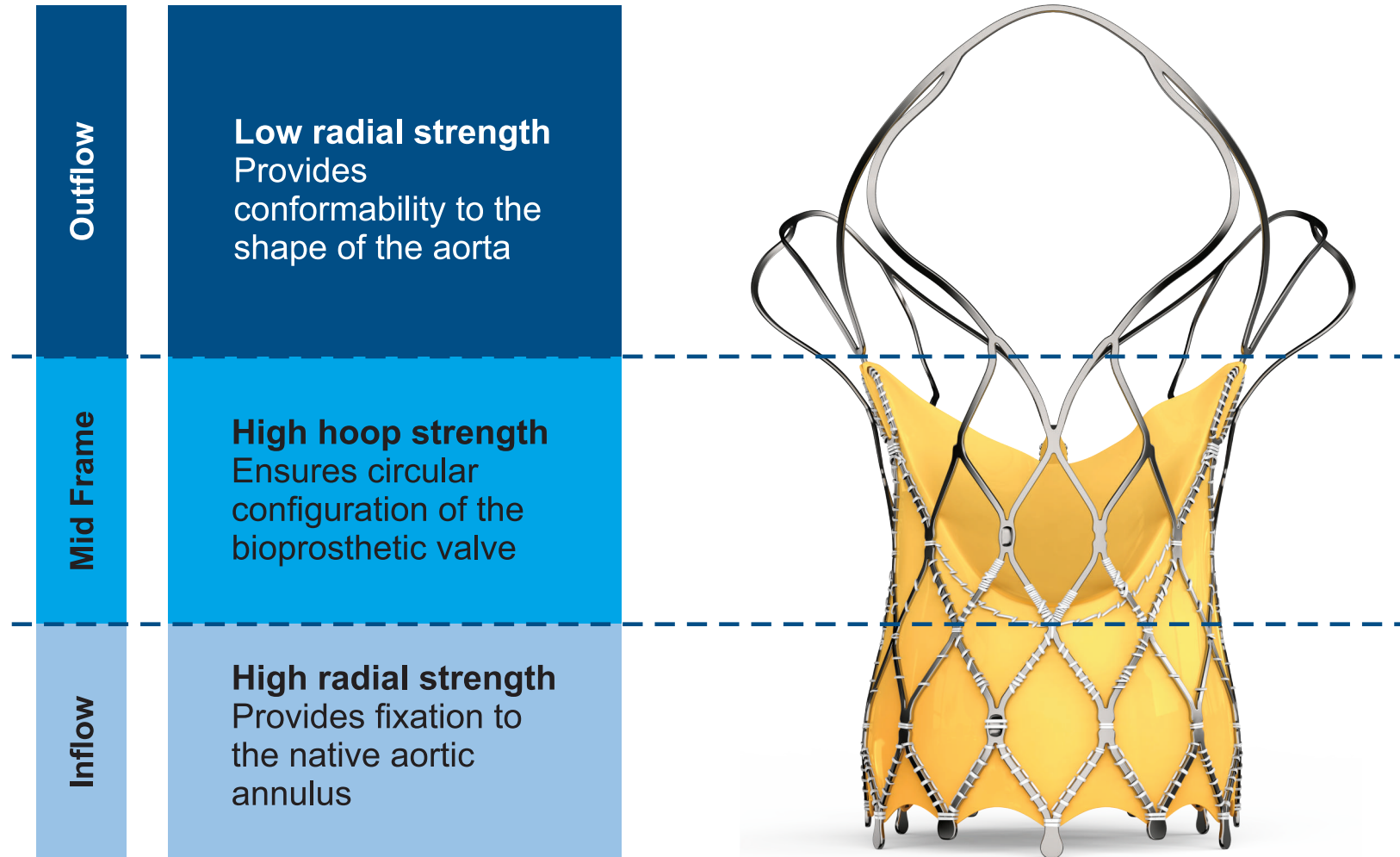


hydra

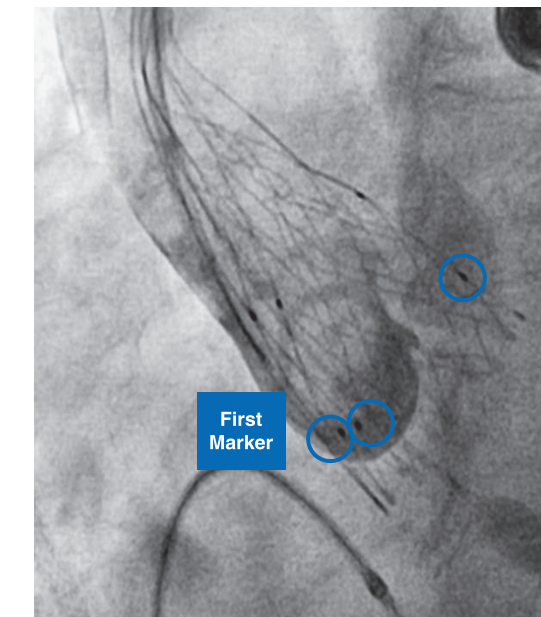
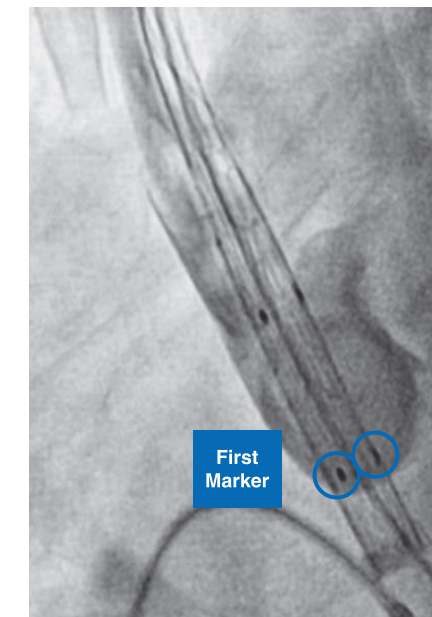
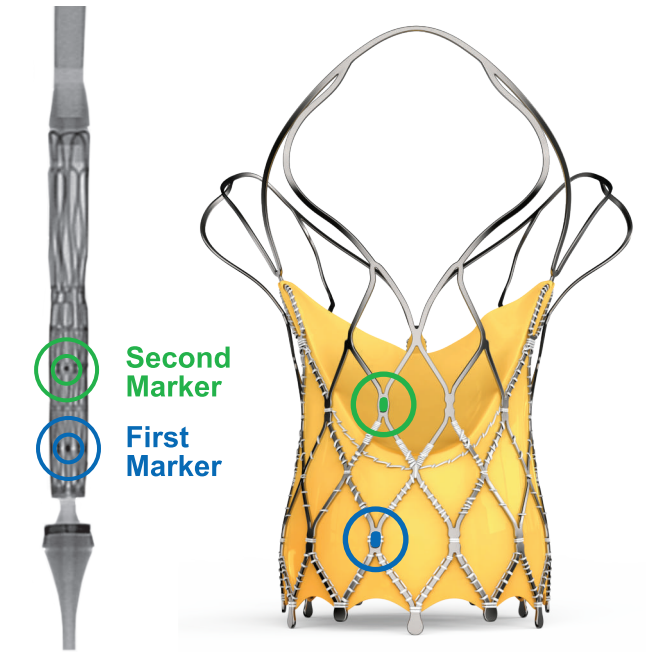
CE
1434

Transcatheter Aortic Valve





- ▶ First self-expanding TAVI device to have 2 rows of marker
 - **First markers** are located at **Node 1**
 - **Second markers** are located at **Node 3**
- ▶ **First marker** helps
 - In precise implantation of the valve at the targeted implantation zone
 - To ascertain the depth of implant
- ▶ **Second marker** indicates
 - When the THV leaflets are going to get deployed



Case Example

Self expandable Nitinol Frame

Conformable to native annulus

Three-tentacle design

Less metal at outflow

Large Frame cells (≥ 15 Fr)

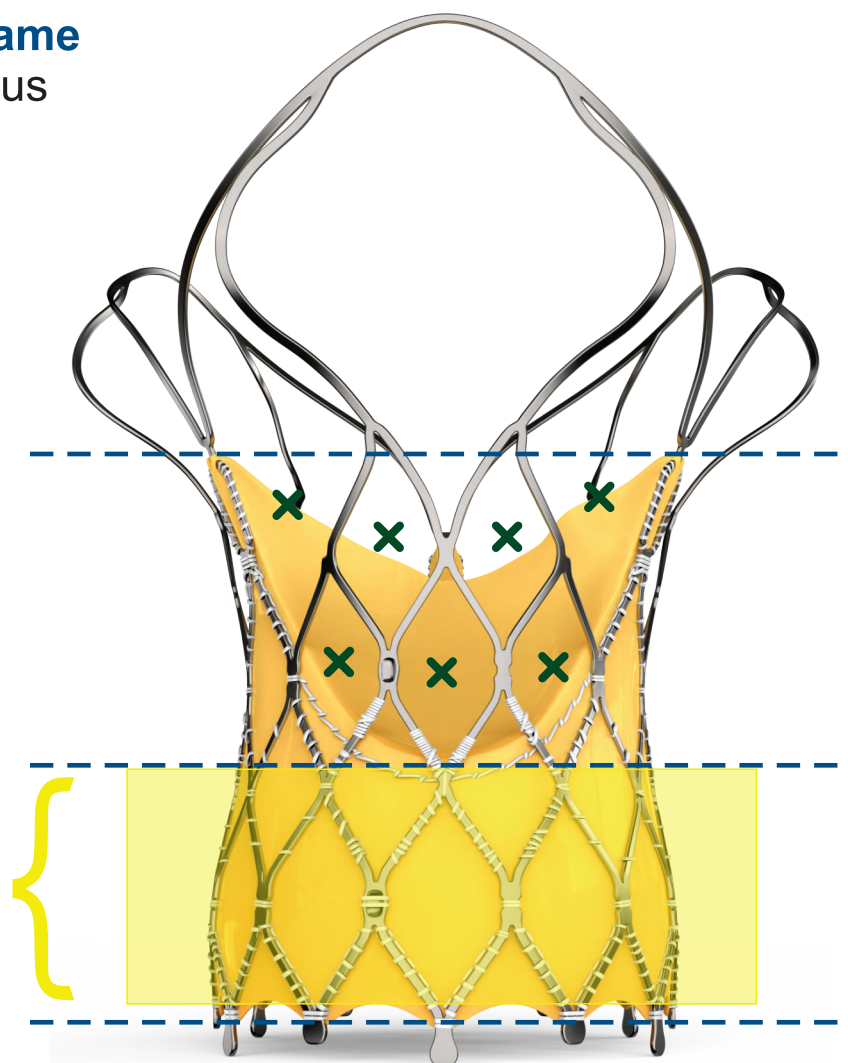
Facilitates easy access to the coronary arteries

Extended Sealing skirt

Mitigates paravalvular leak

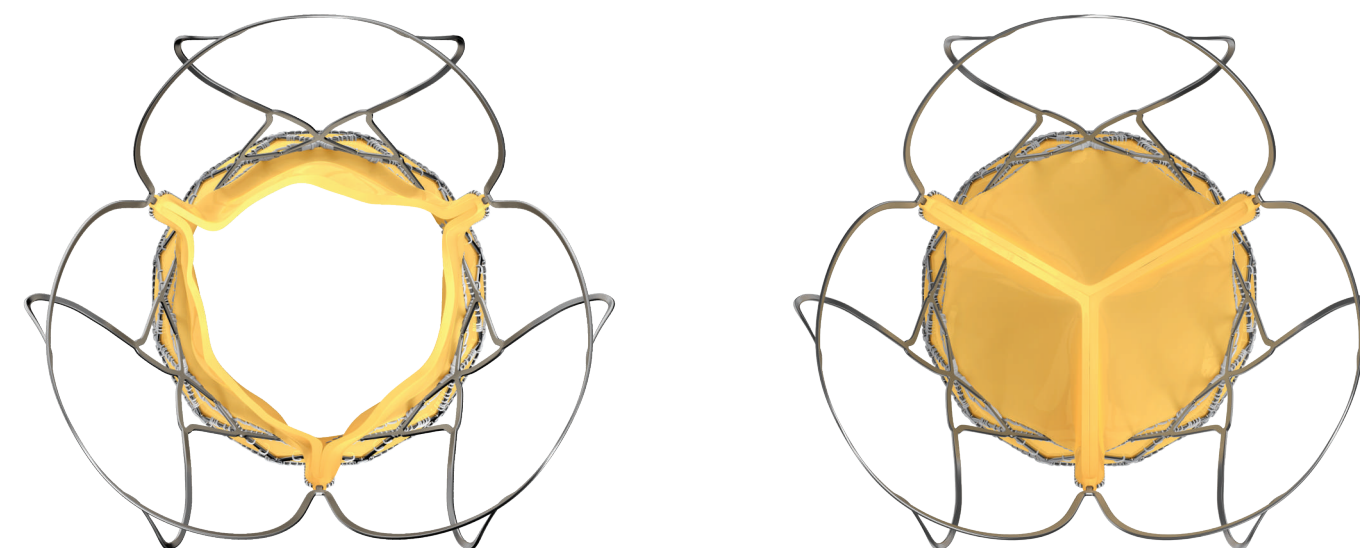
Non-flared inflow part

Reduces conduction abnormality

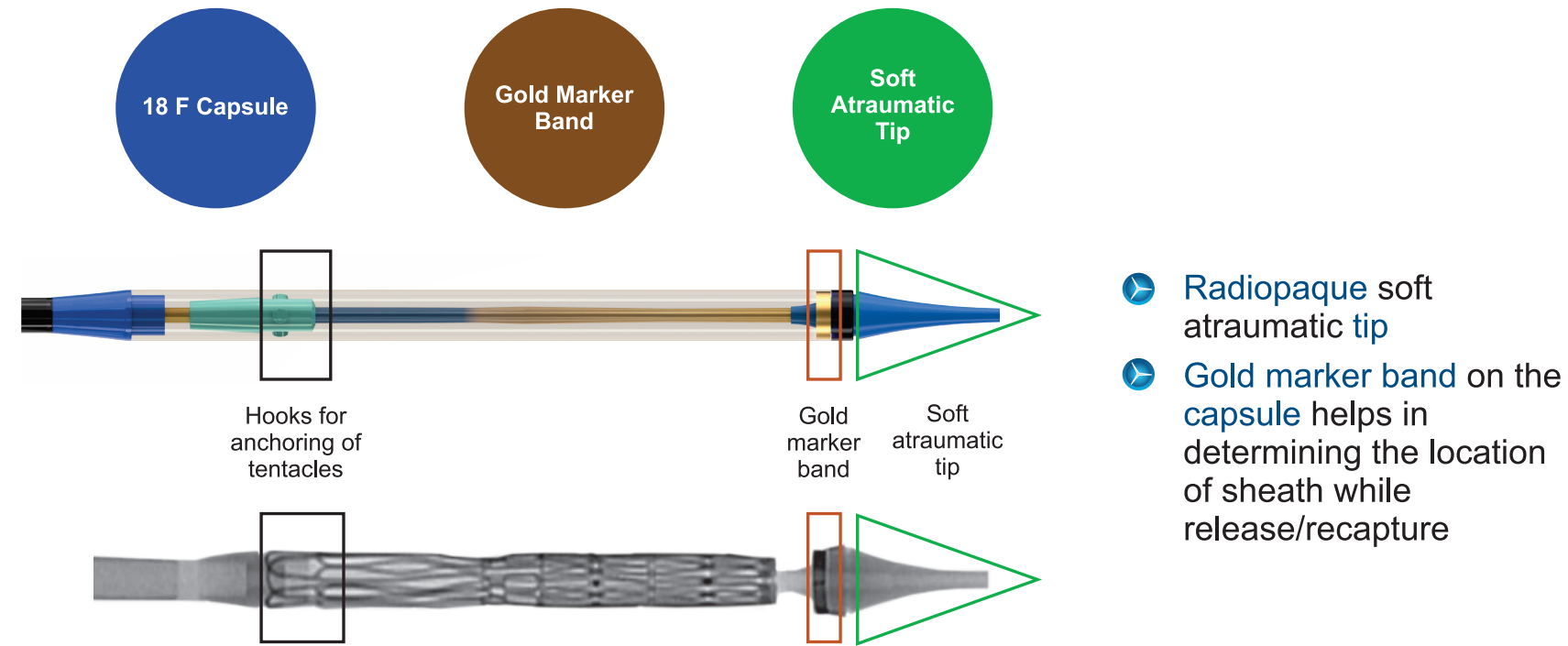


Each 'X' represents a single large cell

- Made from **single bovine pericardium**
- Bioprosthetic valve leaflets are **supra-annular** in position provides superior hemodynamics by providing larger effective orifice area and lower pressure gradient
- **Supra-annular** valve position helps maintain circular shape of the bioprosthetic valve even if the native annulus shape is elliptical
- Proprietary **anti-calcification** treatment

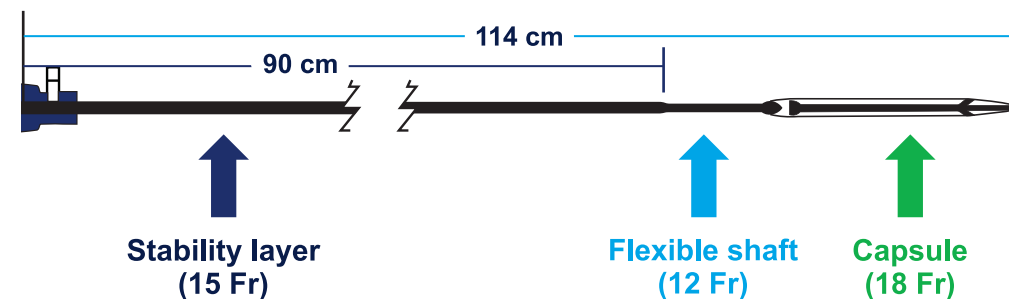


Capsule



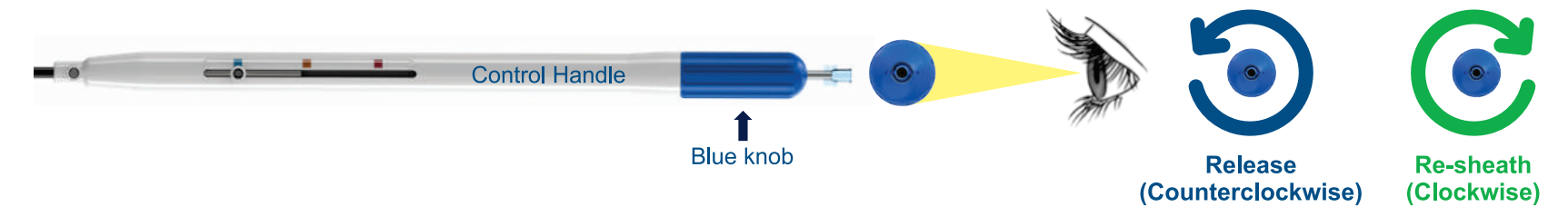
Flexible Shaft and Stability layer

- **Flexible shaft** ensures flexibility of the overall system while navigating through the arch of aorta
- **Stability layer** enables stable catheter position during the deployment and aids in accurate valve implantation



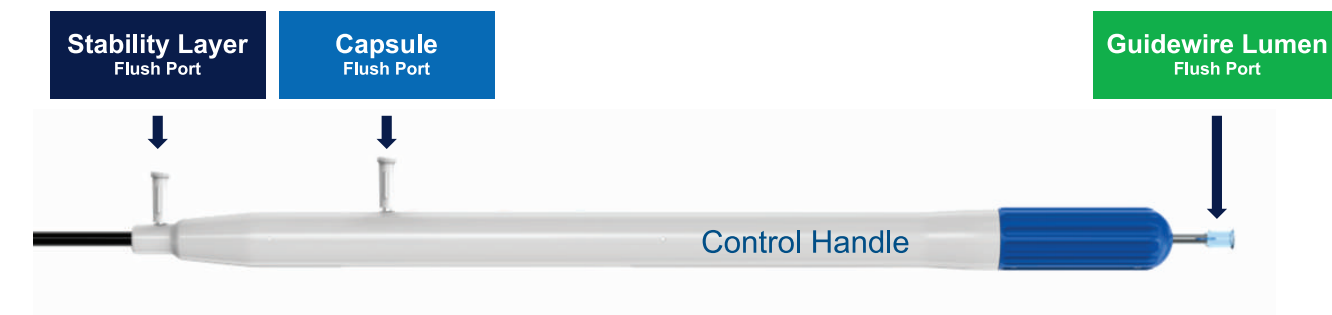
Control Handle

- Three unique color-coded indicators to determine the deployment stage
 - **Blue** signifies fully encapsulated valve
 - **Yellow** signifies release of second marker
 - **Orange** signifies release of tentacles
- **Blue Knob:** Counterclockwise to Un-sheath (Release), Clockwise to Re-sheath (Capture)



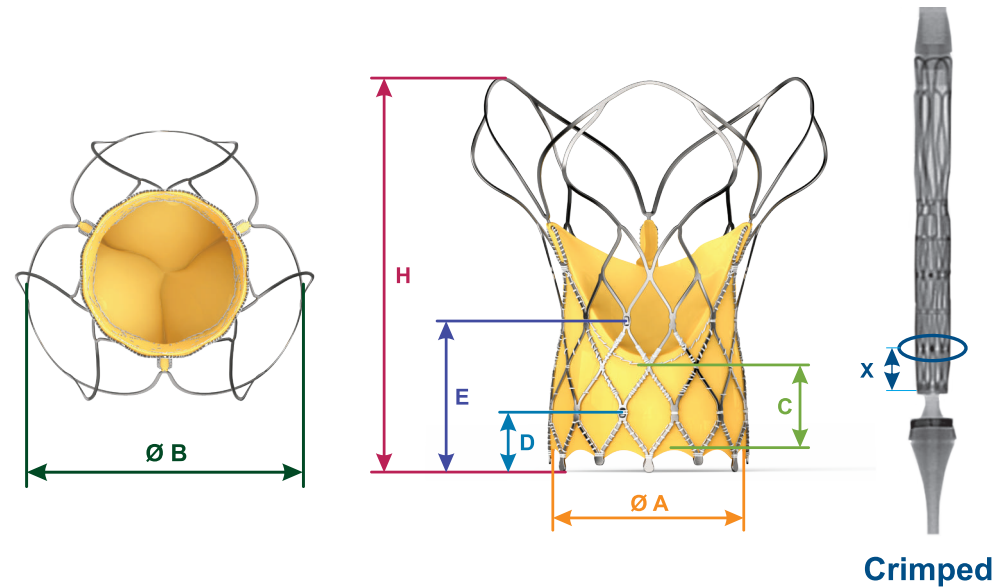
Flush Port

- 3 Dedicated Flush ports on the Control Handle

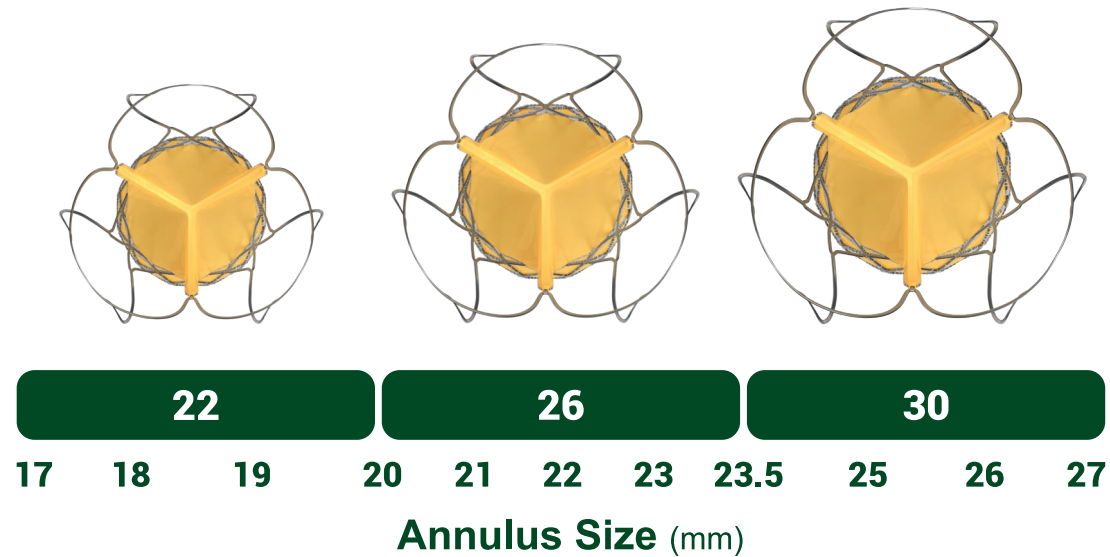


		Hydra 22	Hydra 26	Hydra 30
Diameter at Bottom	A	22	26	30
Diameter at Top	B	39	43	47
Sealing Skirt Height	C	12	13	14
First Marker Crimped	X	8	9	10
First Marker	D	5	6	7
Second Marker	E	15	18	21
Height	H	55	53	51

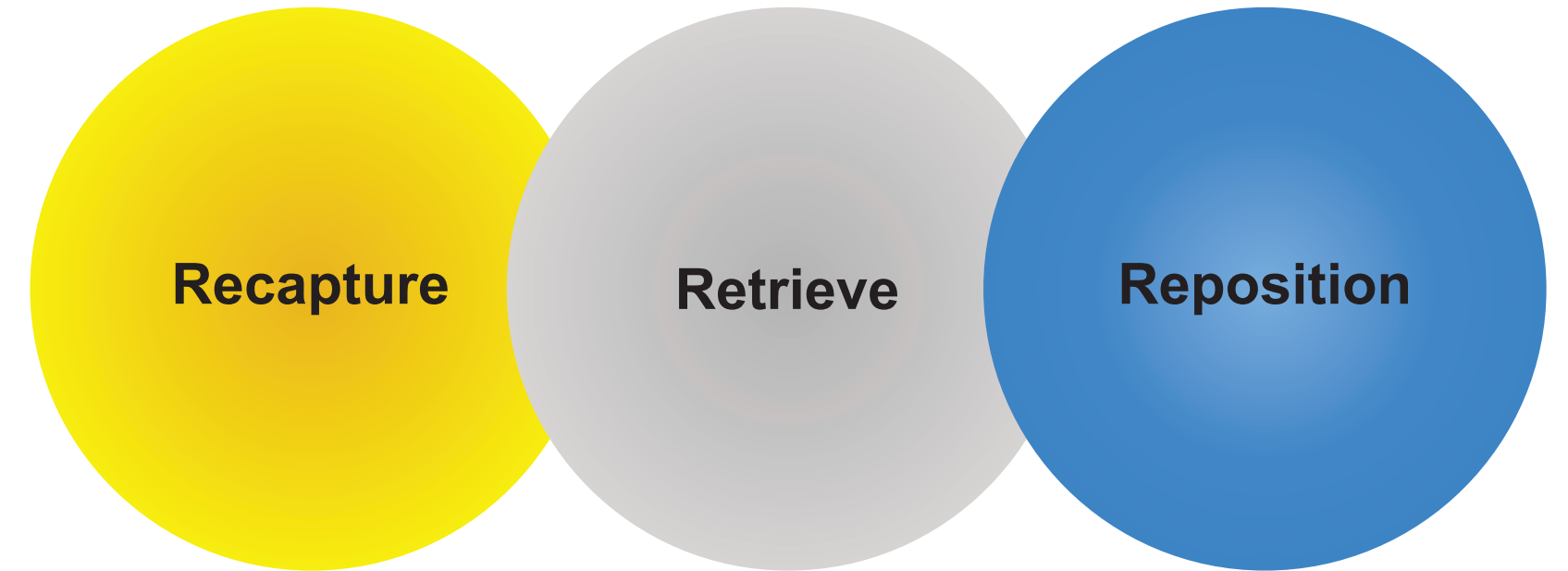
Sizes mentioned in "mm"



Intended Annular Treatment Range



TEE Derived Annular Treatment Range



Hydra THV* can be **Re-captured up to 80%** deployment

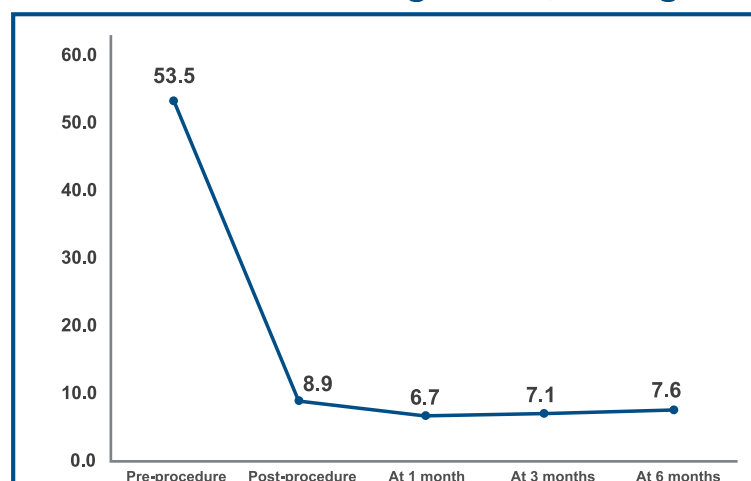
*Transcatheter Heart Valve

Excellent Hemodynamics

Genesis study (n=40)*

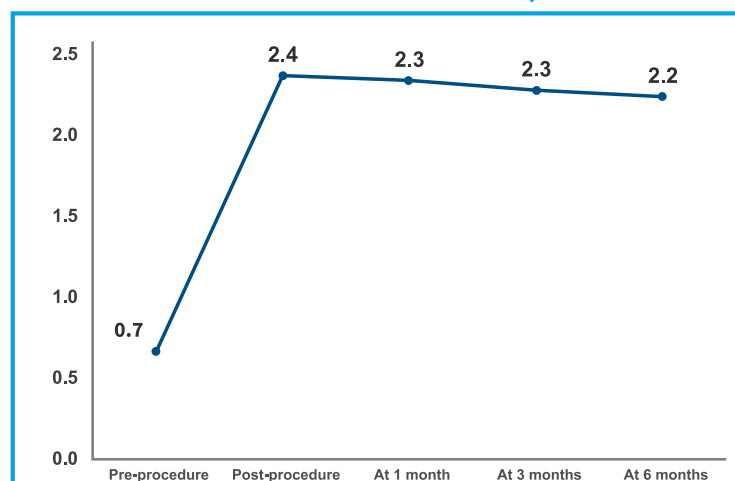
0% moderate-to-severe paravalvular leakage

Mean aortic valve gradient, mmHg



Valve gradient was in single digit and remained consistent at 6-month follow up.

Mean aortic valve area, cm²



Effective orifice area was consistently above 2 cm² up to 6-month follow up.

*11 Centres across India; Mean age: 74.5 years; Mean STS score: 5.05% *Data on file

Ordering information

Reference Number	Size	Delivery Catheter System	Valve Loading system
HYDRA22	22 mm	HYDRA18F	HYDRA18VLS
HYDRA26	26 mm	HYDRA18F	HYDRA18VLS
HYDRA30	30 mm	HYDRA18F	HYDRA18VLS

Frame

- Varying radial force
- Two set of markers on the frame for precise positioning
- Highly flexible design and easy navigation due to less metal.
- Extended Sealing skirt
- Large open cells for future coronary access

Valve

- Supra-annular design
- Bovine pericardial tissue
- Anti-calcification treatment

Hydra AVDC

- 3 Unique color-coded indicators for deployment guidance
- Ease of release of the valve
- One delivery system for three THV sizes
- 18 Fr compatible

Safety features

- Recapturable
- Repositionable
- Retrievable

www.smtpl.com

Head office – Surat

Sahajanand Medical Technologies Pvt. Ltd.
Sahajanand Estate, Wakhariawadi, Near
Dabholi, Ved Road, Surat - 395 004, GJ, India.
Tel: +91 261 3060606 | +91 261 6112800
Fax: +91 261 3060607
E-mail: contact@sahmed.com

Corporate office – Mumbai

Sahajanand Medical Technologies Pvt. Ltd.
221, C – Wing, Kankia Atrium,
Andheri - Kurla Road
AAI Colony, J B Nagar, Andheri East,
Mumbai, Maharashtra 400059, MH, India.
Tel: +91 22 3004 0000 | +91 22 6284 4000
Fax: +91 22 3004 0099
E-mail: contact@sahmed.com

Ireland office

Sahajanand Medical Technologies Ireland Ltd.
Ground Floor, Block 5, Galway Technology Park,
Parkmore, Galway, H91 R9YR, Ireland.
Tel: +353 9139 7472
E-mail: contact@sahmed.com

Russia

SMT CIS
Building 1, 89 Krasnobogatyrskaya str.
Moscow 107076,
Russian Federation.
Mrs.Maria Bokova Tel: +7 906 7368113
E-mail: maria.bokova@smtpl.com

Poland

SMT Polonia sp. z o.o.
Al. Grunwaldzka 411,
80-309 Gdańsk,
Aurum, 5 piętro.
Tel: +48 603 095 223
E-mail: marek.kurysz@smtpl.com

Germany & Austria

SMT Germany GmbH
Weiseler Strasse 16,
35510 Butzbach, Germany
Tel: +496033.97 24 53-0
Fax: +496033.97 24 53-9
E-mail: customer care.dach@smtpl.com

Switzerland

SMT Switzerland AG
Bundesstrasse 9,
6302 Zug.
Tel: +41 (0) 41 71000 82
Fax: +41 (0) 41 71000 84
E-mail: customer care.dach@smtpl.com

Spain

SMT Iberia
Leonardo Da Vinci, 22,
46980 Paterna Valencia SPAIN.
Tel: +34 96 293 4934
Fax: +34 96 293 4933
E-mail: info.iberia@smtpl.com

*Caution: This product is intended for use by or under the direction of a physician. Prior to use, refer to the "Instructions for use" supplied with these devices for indications, contraindications, side effects, suggested procedure warnings and precautions. As part of our continuous product development policy we reserve the right to change product specifications without prior notification. Check the regulatory status of the device before distribution in areas where CE marking is not the regulation in force. Illustrations are artist's representations only and should not be considered as engineering drawings or photographs. Photos on file at Sahajanand Medical Technologies Pvt. Ltd. **Disclaimer:** © 2020 Sahajanand Medical Technologies Pvt. Ltd. – All rights reserved. Specifications are subject to modification, revision and improvement.*

