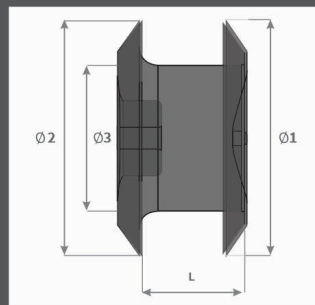




VSD Occluder No COMPROMISE

Technical specifications and ordering information



Design:

- Ø1 - Left ventricular disc diameter
- Ø2 - Right ventricular disc diameter
- Ø3 - Waist diameter
- L - Waist length

Thickness of the septum is considered for selecting the length of the device

Catalog number	Left ventricular disc diameter (Ø 1) (mm)	Right ventricular disc diameter (Ø 2) (mm)	Waist diameter (Ø 3) (mm)	Waist length (L) (mm)	Recommended for VSD size (mm)	Accessory catalog number
COV0404	10	10	3.25	4	3	COV6F / COVII6F
COV0604	12	12	5.25	4	3.1 to 5	COV6F / COVII6F
COV0804	14	14	7.25	4	5.1 to 7	COV6F / COVII6F
COV1004	16	16	9.25	4	7.1 to 9	COV7F / COVII7F
COV1204	18	18	11.25	4	9.1 to 11	COV7F / COVII7F
COV0407	10	10	4	7	2	COV6F / COVII6F
COV0607	12	12	6	7	2.1 to 4	COV6F / COVII6F
COV0807	14	14	8	7	4.1 to 6	COV6F / COVII6F
COV1007	16	16	10	7	6.1 to 8	COV7F / COVII7F
COV1207	18	18	12	7	8.1 to 10	COV7F / COVII7F
COV0410	10	10	4	10	2	COV6F / COVII6F
COV0610	12	12	6	10	2.1 to 4	COV6F / COVII6F
COV0810	14	14	8	10	4.1 to 6	COV6F / COVII6F
COV1010	16	16	10	10	6.1 to 8	COV7F / COVII7F
COV1210	18	18	12	10	8.1 to 10	COV7F / COVII7F

Usable lengths of accessories (cm)

	6F	7F
Sheath	83	83
Dilator	89	89
Loader	9	9

Delivery cable & sheath

Catalog number	Description	Diameter		Length
CDCV	Delivery cable	0.030"		140 cm
	Delivery cable sheath	ID	OD	125 cm
		0.055"	0.079"	

VSD : Ventricular Septal Defect
*Data on SMT file.

#Recapture and redeployment is possible only if delivery cable is securely connected to the disc

Caution: This product is intended for use by or under the direction of a physician. Prior to use, refer to the "Instructions for use" supplied with these devices for indications, contraindications, side effects, suggested procedure warnings and precautions. As part of our continuous product development policy, we reserve the right to change product specifications without prior notification. Information contained herein is for distribution outside the USA & Japan.

Check the regulatory status of the device before distribution in areas where CE marking is not the regulation in force. Tests performed by and data on file at Sahajanand Medical Technologies Limited (SMT). Illustrations are artist's representations only and should not be considered as engineering drawings or photographs. Photos on file at Sahajanand Medical Technologies Limited. Cocoon VSD Occluder is manufactured by Vascular Innovations Co., Ltd, Thailand, a SMT group company. Cocoon is a trademark of Vascular Innovations Co., Ltd. Cocoon range of occluders are currently not approved by USFDA and are not available for sale in USA.

Disclaimer: © 2023 Sahajanand Medical Technologies Limited - All rights reserved. Specifications are subject to modification, revision and improvement.

Registered Office: Sahajanand Medical Technologies Limited

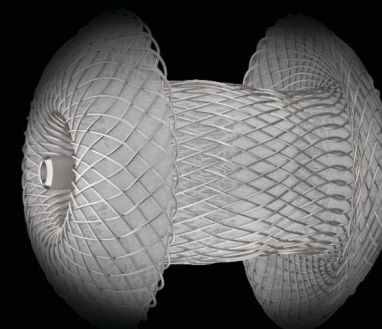
"Sahajanand Estate", Wakharla Wadi, Near Dabhohi Char Rasta, Ved Road, Surat 395004, Gujarat, INDIA Tel: +91 261 6112800 Fax: +91 261 6112801

• CIN: U33119G12001PLC040121 • www.smtpl.com



VSD Occluder

No COMPROMISE



COV/BRO/EN01 Rev.02





VSD Occluder No COMPROMISE

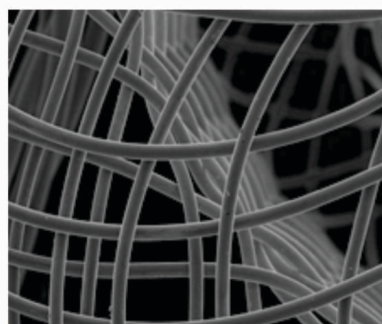
60,000+ implants globally



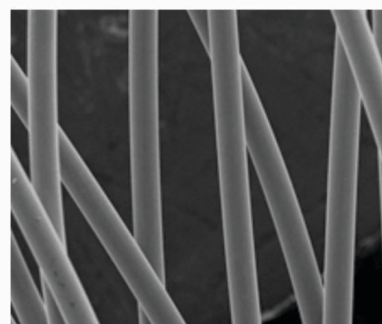
Platinum coating technology

Nitinol wire used in Cocoon occluders is coated with **Platinum** atoms using nano fusion technology by plasma deposition.

Raw Nitinol



Electropolished



Platinum coating



Platinum coating makes Cocoon occluders:

Biocompatible

Non-corrosive

Non-allergic

More radiopaque



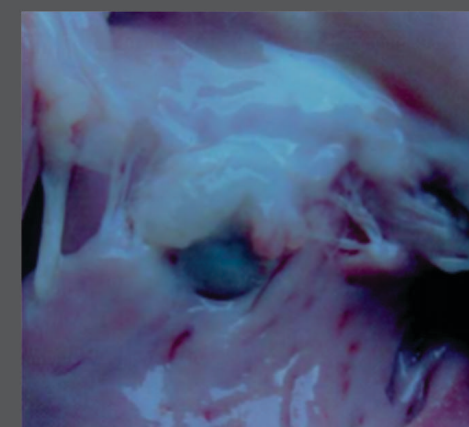
VSD Occluder No COMPROMISE

Key highlights

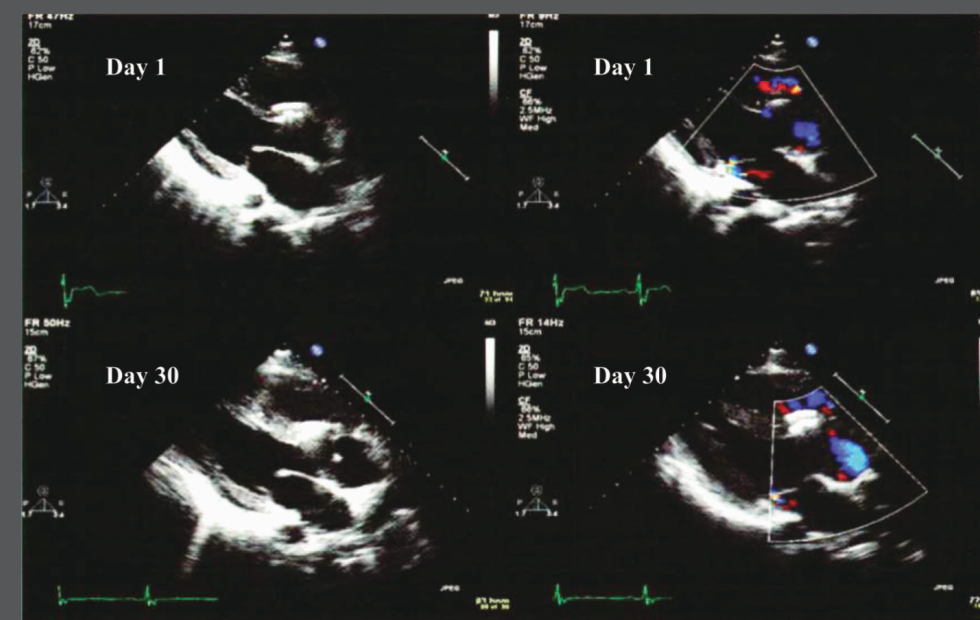
- Self-expanding, double disc device with unique Platinum coating
- 4, 7, & 10 mm waist lengths available
- Available in multiple lengths to match the types and locations of the ventricular septal defects to close membranous and muscular defects
- Discs are filled with polypropylene fabric which assists thrombogenicity
- Ability to recapture and redeploy*

Preclinical Studies

Ventricular septal defect was created in swine models and subsequently implanted with a Cocoon VSD occluder.



Explants at 30 days show the device incorporated with tissues



Echo images of the swine at day 1 and day 30 showing the complete closure of the defect