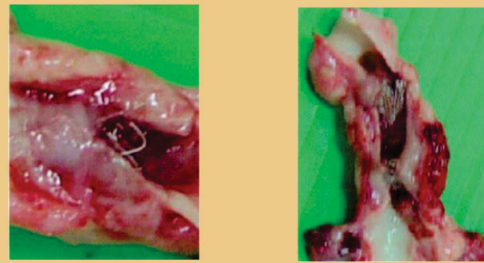




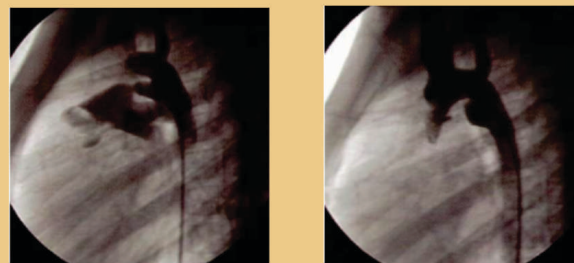
# Duct Occluder No COMPROMISE

## Preclinical studies\*



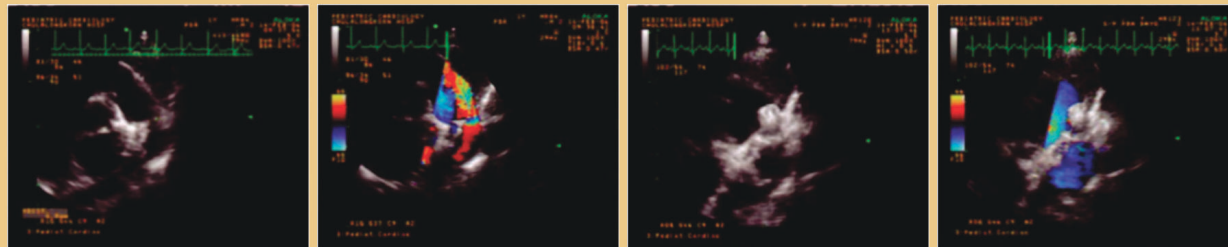
Seven days after implantation in a pig PDA shows a well-encapsulated device

## Clinical case\*



Aortogram in a 5-year-old girl with PDA before Cocoon device implantation

Aortogram in a 5-year-old girl with PDA after Cocoon device implantation



Echocardiographic study in 1-year-old boy with PDA size 4.8 mm

Color Doppler showing flow from descending aorta across PDA to pulmonary artery

Echocardiographic study 2 hours after device implantation showing completely closed PDA

Color Doppler showing complete closure, two hours after device implantation

## Ordering information

Product code	Sheath (F)	Cocoon accessory set catalog number	Cocoon delivery cable catalog number
COP0406	6-7	COP6F / COP7F	CDC5F / CDC6F
COP0608	6-7	COP6F / COP7F	CDC5F / CDC6F
COP0810	7-8	COP7F / COP8F	CDC6F
COP1012	7-8	COP7F / COP8F	CDC6F
COP1214	8-9	COP8F / COP9F	CDC6F
COP1416	8-9	COP8F / COP9F	CDC6F
COP1618	9	COP9F	CDC6F
COP1820	9	COP9F	CDC6F

PDA: Patent Ductus Arteriosus  
1. Medicine (Baltimore). 2019 Mar; 98(10): e14684.  
\*Data on SMT file.

#Recapture and redeployment is possible only if delivery cable is securely connected to the disc.

Caution: This product is intended for use by or under the direction of a physician. Prior to use, refer to the "Instructions for use" supplied with these devices for indications, contraindications, side effects, suggested procedure warnings and precautions. As part of our continuous product development policy, we reserve the right to change product specifications without prior notification. Information contained herein is for distribution outside the USA & Japan.

Check the regulatory status of the device before distribution in areas where CE marking is not the regulation in force. Tests performed by and data on file at Sahajanand Medical Technologies Limited (SMT). Illustrations are artist's representations only and should not be considered as engineering drawings or photographs. Photos on file at Sahajanand Medical Technologies Limited.

Cocoon Duct Occluder is manufactured by Vascular Innovations Co., Ltd, Thailand, a SMT group company. Cocoon is a trademark of Vascular Innovations Co., Ltd.

Cocoon range of occluders are currently not approved by USFDA and are not available for sale in USA.

Disclaimer: © 2023 Sahajanand Medical Technologies Limited - All rights reserved. Specifications are subject to modification, revision and improvement.

Registered Office: Sahajanand Medical Technologies Limited

\*Sahajanand Estate, Wakharia Wadi, Near Dabhoh Char Rasta, Ved Road, Surat 395004, Gujarat, INDIA Tel: +91 261 6112800 Fax: +91 261 6112801  
• CIN: U33119G2001PLC040121 • www.smtpl.com



COP/BRO/EN01 Rev.02



# Duct Occluder

# No COMPROMISE





## Duct Occluder No COMPROMISE

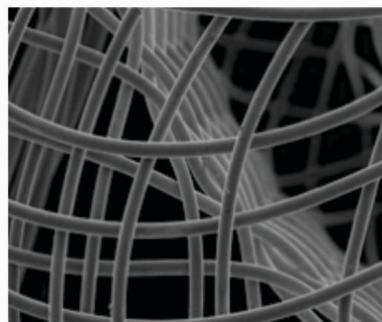
60,000+ implants globally



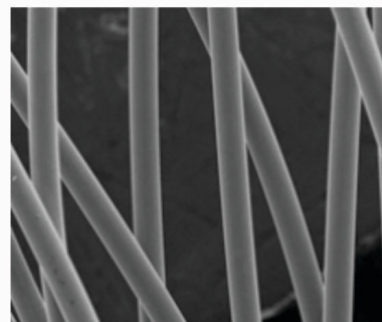
### Platinum coating technology

Nitinol wire used in Cocoon occluders is coated with **Platinum** atoms using nano fusion technology by plasma deposition.

Raw Nitinol



Electropolished



Platinum coating



### Platinum coating makes Cocoon occluders:

**Biocompatible**

**Non-corrosive**

**Non-allergic**

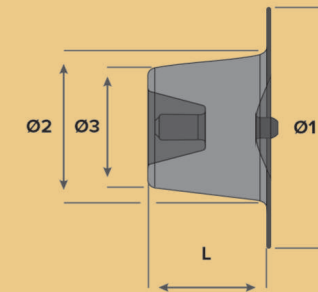
**More radiopaque**



## Duct Occluder No COMPROMISE

### Key highlights

- Hat-shaped design ensures secured implantation at aorta and minimizes risk of migration into pulmonary artery
- Unique Platinum coating
- Device is filled with polypropylene fabric to assist thrombogenicity
- Extended retention portion provides proper positioning of the device in the ductus arteriosus
- 100% occlusion rate at one month follow-up<sup>1</sup>
- Ability to recapture and redeploy<sup>#</sup>



Design:

Ø1 – Retention skirt diameter

Ø2 – Device diameter at descending aorta

Ø3 – Device diameter at pulmonary artery

L – Device length

### Technical specifications

Product code	Retention skirt diameter (mm) Ø1	Device diameter at descending aorta (mm) Ø2	Device diameter at pulmonary artery (mm) Ø3	Device length (mm) L	Compatible sheath size (F)
COP0406	10	6	4	7	6-7
COP0608	12	8	6	7	6-7
COP0810	16	10	8	8	7-8
COP1012	18	12	10	8	7-8
COP1214	20	14	12	8	8-9
COP1416	22	16	14	8	8-9
COP1618	24	18	16	8	9
COP1820	26	20	18	8	9

### Usable length (cm)

	6F	7F	8F	9F
Sheath	83	83	83	83
Dilator	89	89	89	89
Loader	10	10	10	12

### Delivery cable

Catalog number	Profile	Length	Size
CDC5F	0.043"	125 cm	5F
CDC6F	0.077"	117 cm	6F

